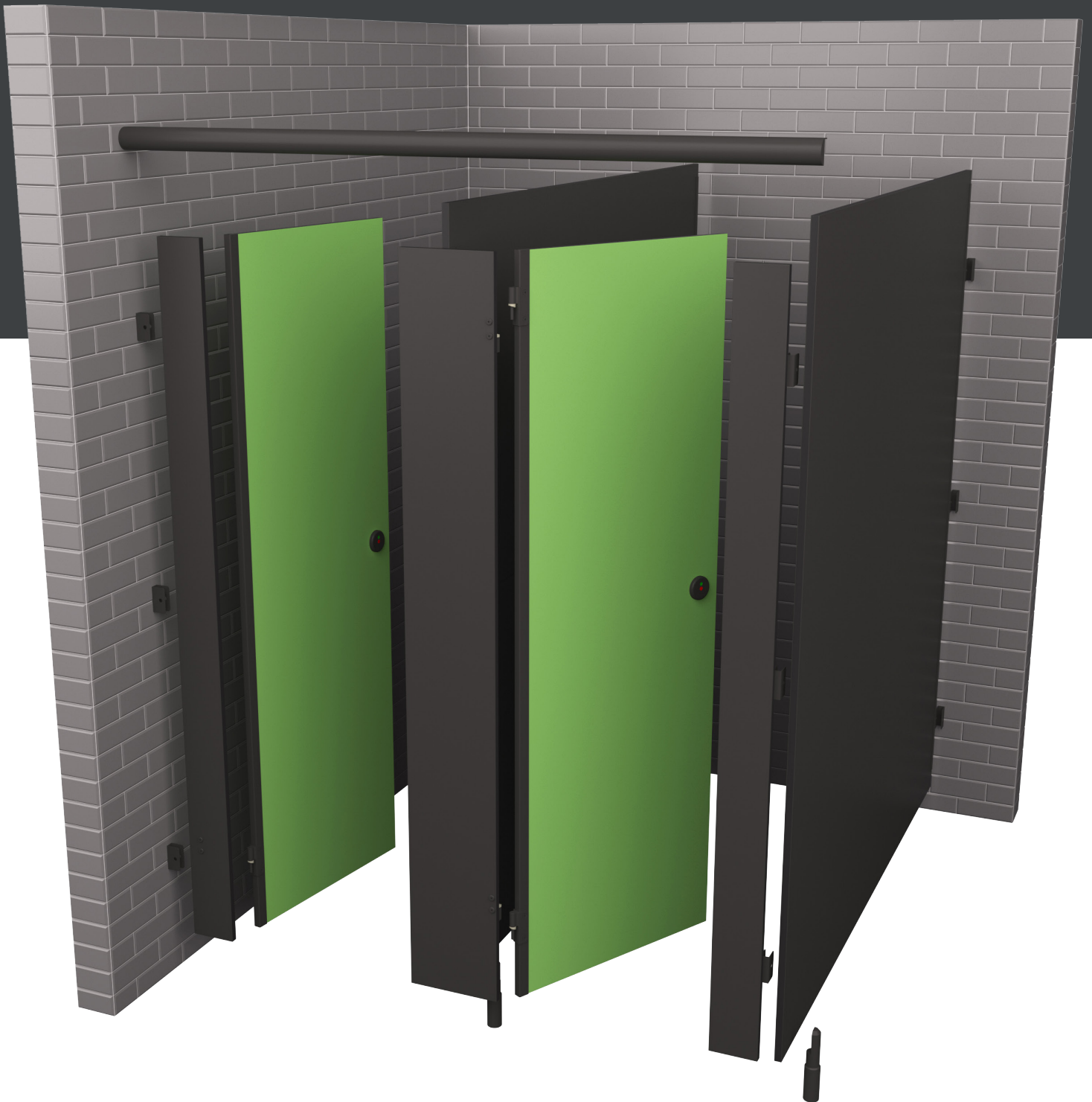




# Cubicle Installation



TCO  
Washroom Systems



# Cubicle Fittings



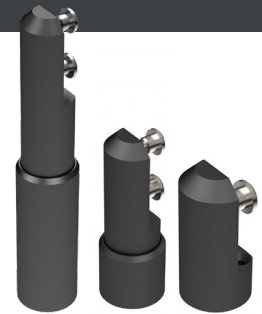
**1B1 Outward Lock Latch**



**1B1 Indicator Lock**



**1B12 Indicator Lock Latch**



**L6 Support Leg**  
(150mm / 50mm / 20mm)



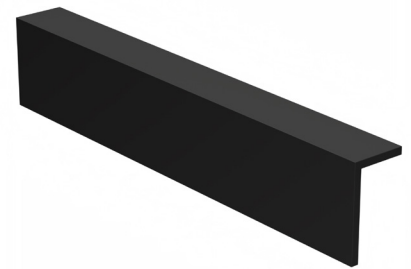
**Compact Grade Bracket**



**B3 U Bracket**



**HO5 Hinge**



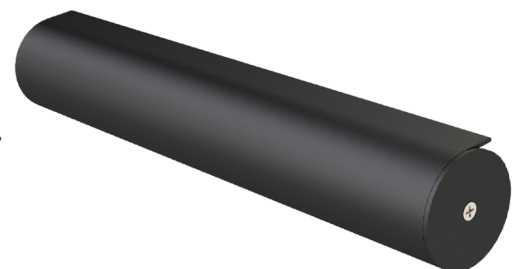
**HR1**



**Coat Hook**



**HR5**

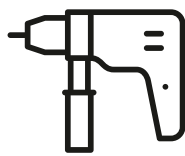


**HR5 with End Cap**

# Tools Required



**Cordless Drill**



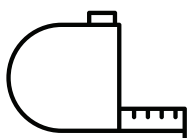
**Hammer Drill**



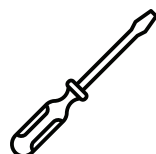
**Circular Saw**



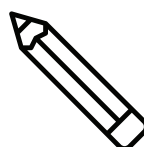
**Spirit Level**



**Tape Measure**



**Screwdriver**



**Pencil**



**Allen Key Set**



**Hammer**

# Step 1

1. Measure and mark a vertical line on the rear wall for the partition positions.
2. Mark the wall equally to fix 3 x wall U brackets per partition and end wall pilasters.

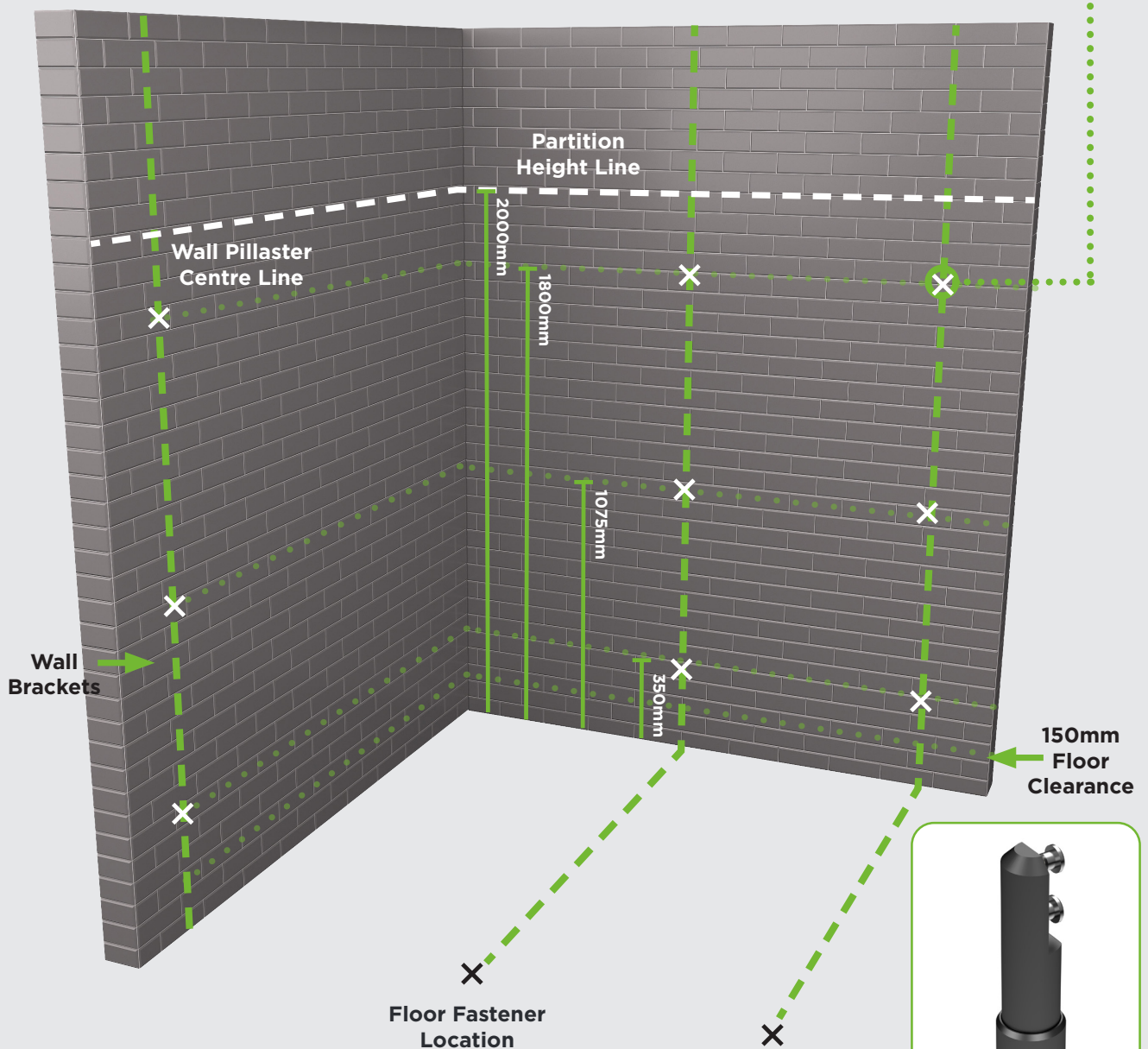
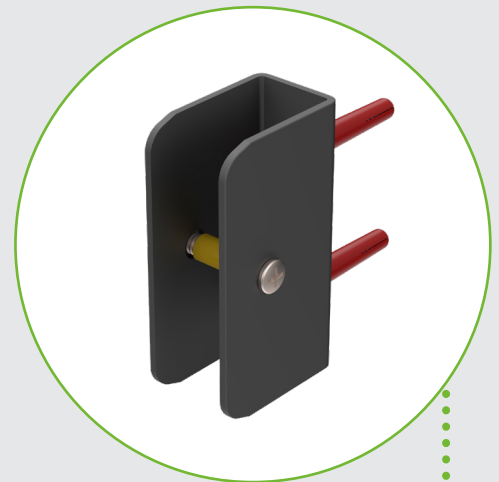
## Wall U brackets fixing measurements

**Bottom U Bracket** - 350mm from the floor up to the 1st U bracket

**Middle U Bracket** - 1075mm up from the floor the centre U bracket.

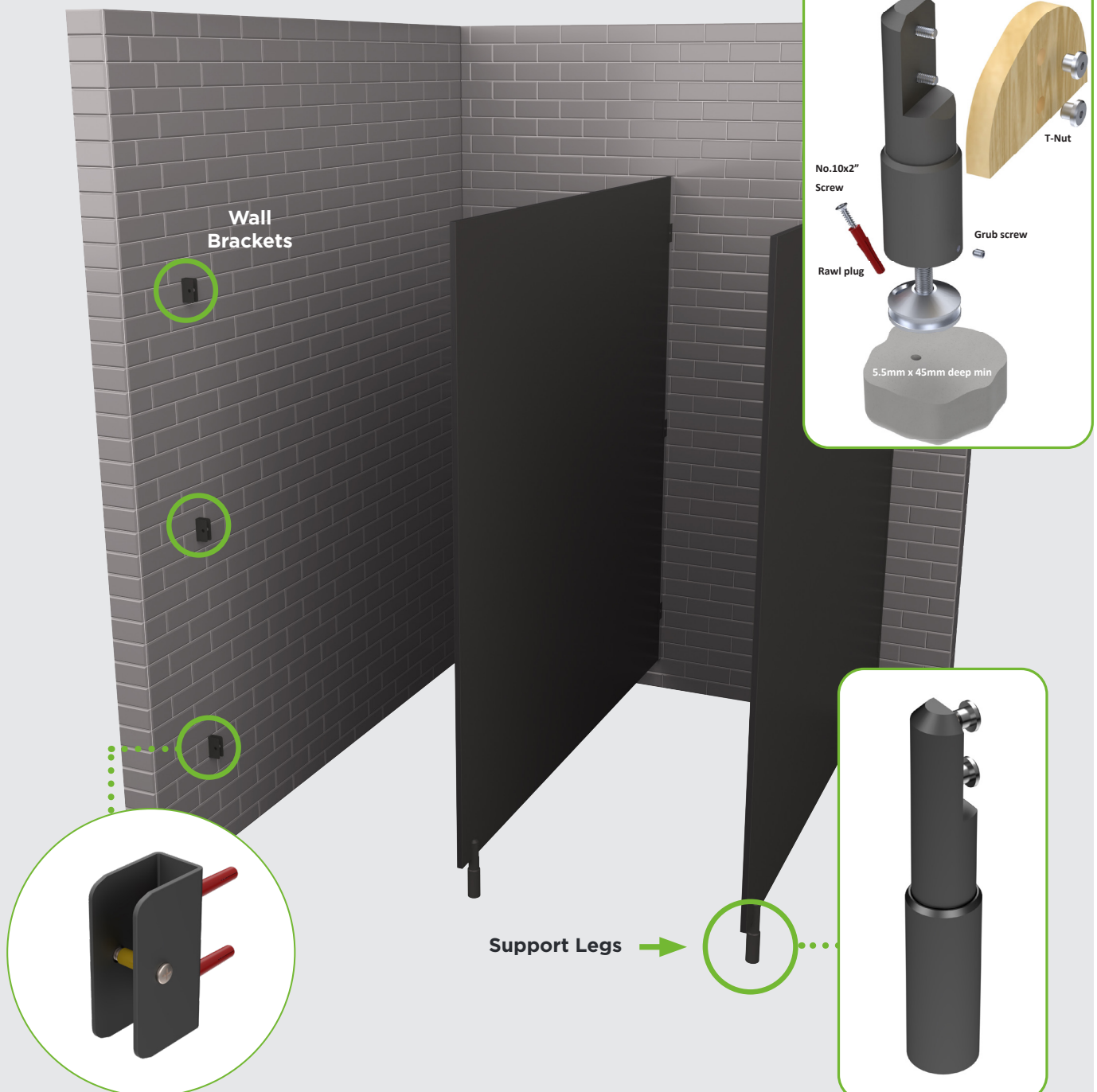
**Top U Bracket** - 1800mm up off the floor to the centre of the bracket.

Please see dimension below for U bracket centre positions



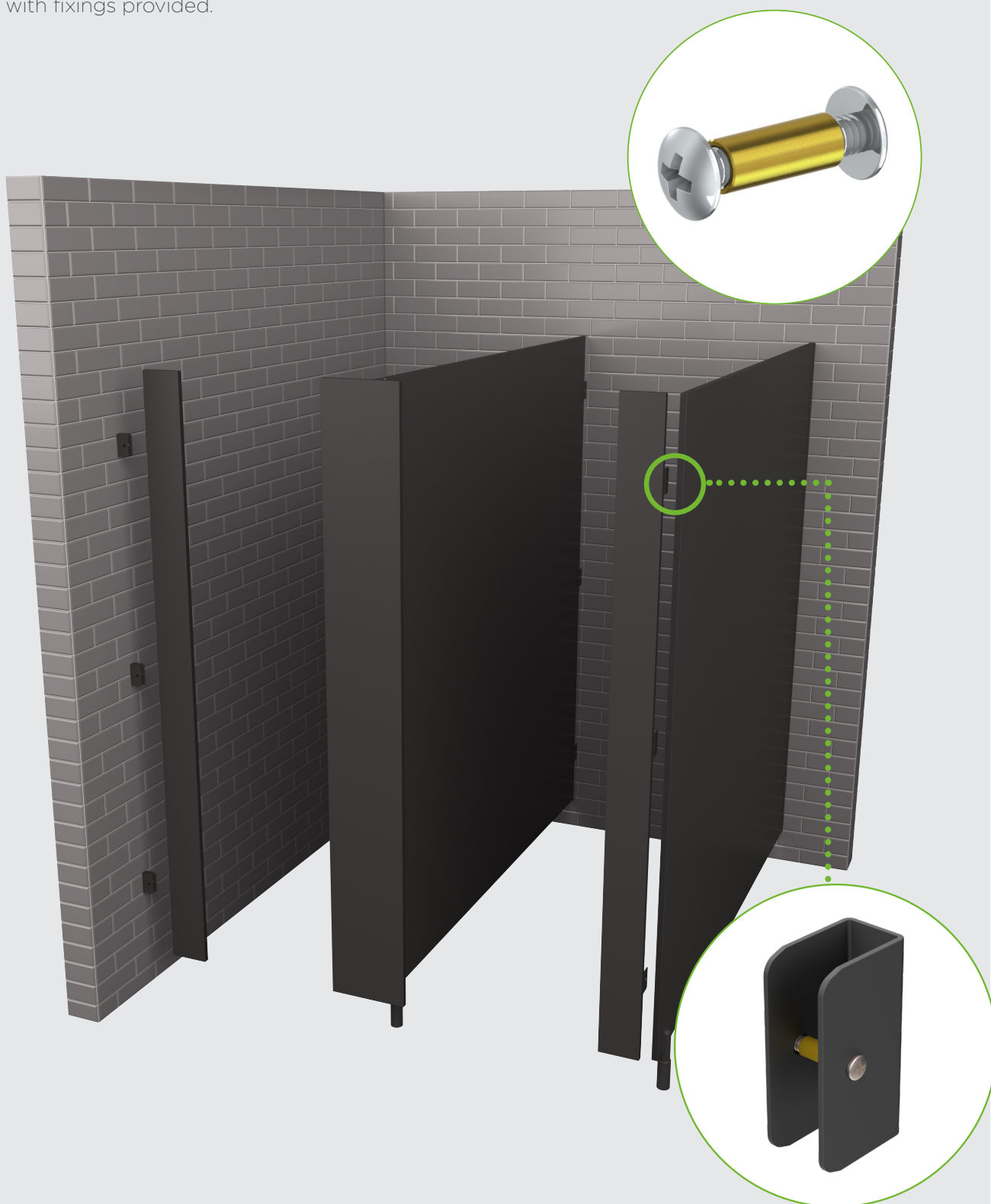
# Step 2

1. Fix and secure 3 x U brackets for each partition on the vertical line you have marked on the back structural wall. Please set out the u brackets as per the dimension table.
2. Fix the support leg onto the bottom of the partition panel where the holes have been pre drilled.
3. Insert the partition panel into the wall u brackets on the back structural wall securing the panel with fixings provided.
4. Release the grub screw on the base of the leg to release the sleeve casing to enable you to wind the leg until the partition panel becomes level.
5. Drill and anchor the support leg into the floor through the fixing point on the base of the foot. Once this has been completed slide the sleeve back down in its closed position and secure the grub screw with an Allen key.



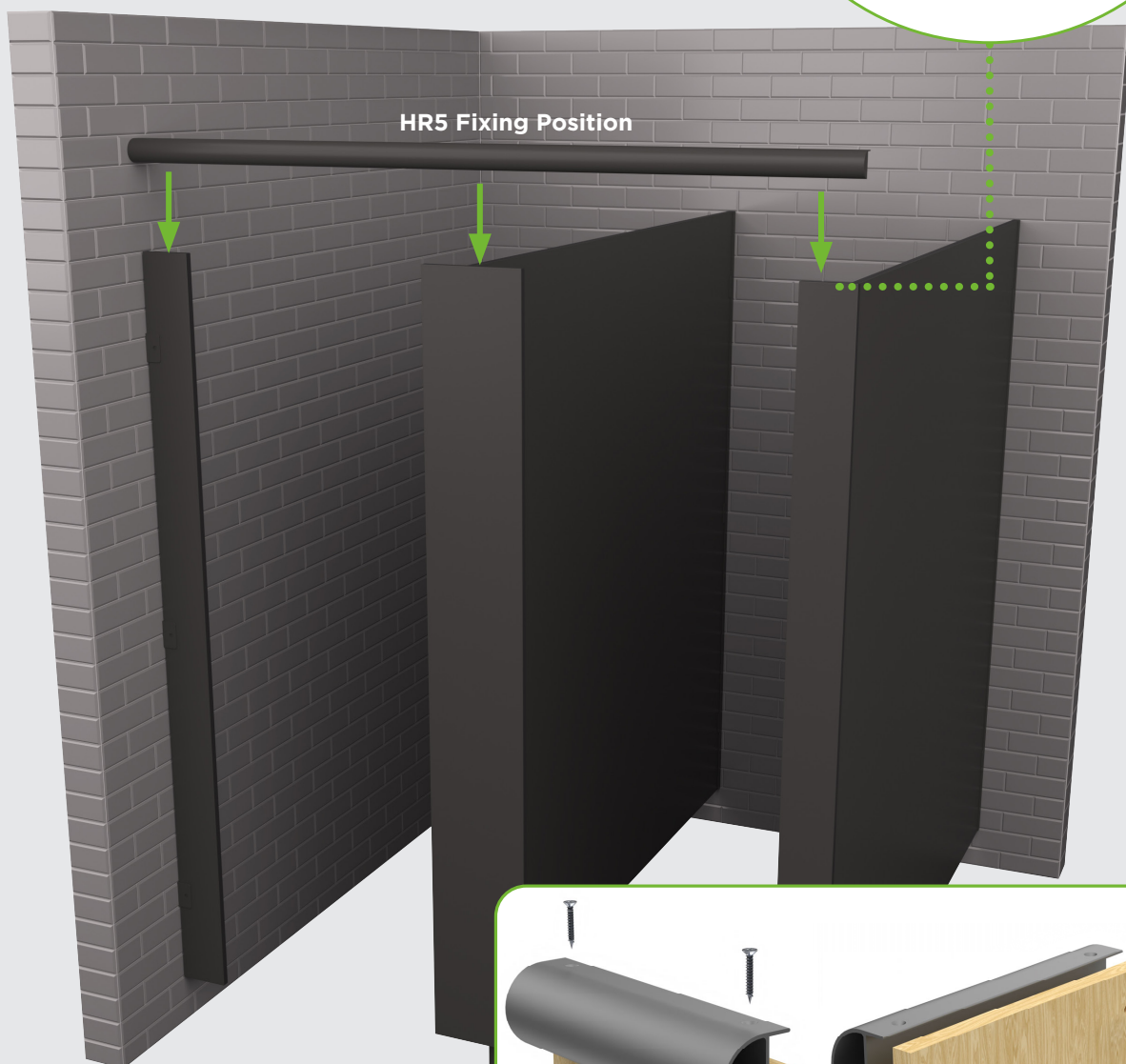
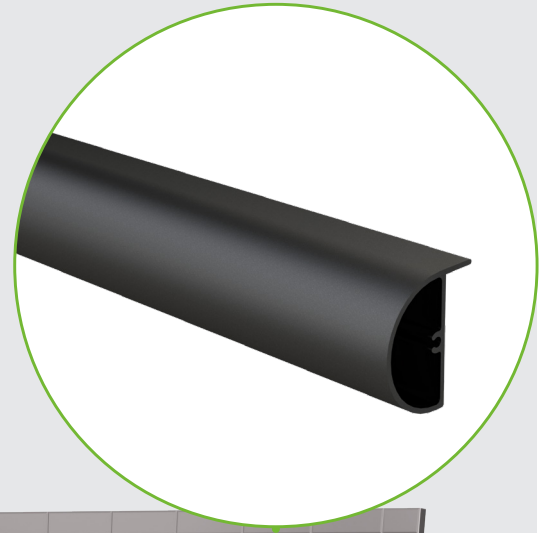
# Step 3

1. Fix and secure wall pilaster into wall brackets using the fitting provided.
2. Fix U Brackets to middle pilasters, then secure the pilaster to the partition with fixings provided.
3. Fix 3 x U brackets onto the back side of the end pilaster into the predrilled holes. The brackets should be flush with the edge of panel.
4. Attached pilaster onto the end partition, then secure the panels together using the bolt through fixing provided.



# Step 4

1. Mark and drill 2x pilot holes in top section of headrail to fix to each pilaster.
2. Drill and fix HR5 down into the top of the front pilasters.

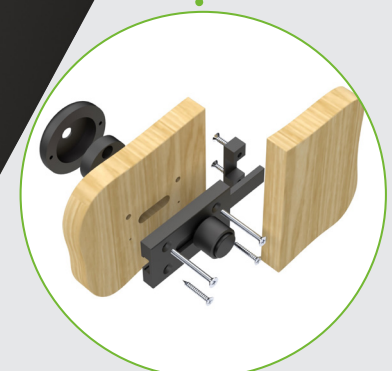
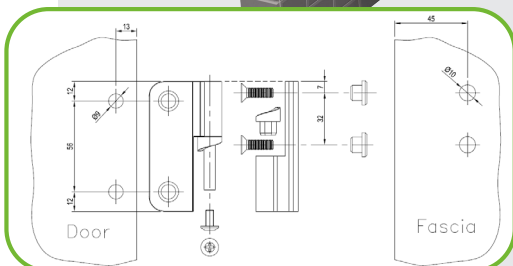
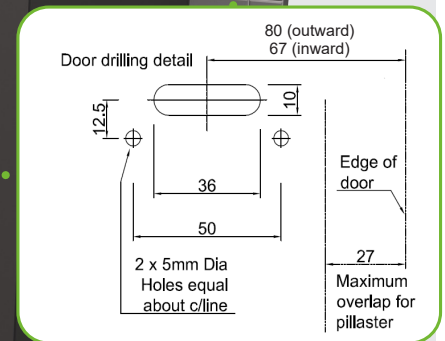
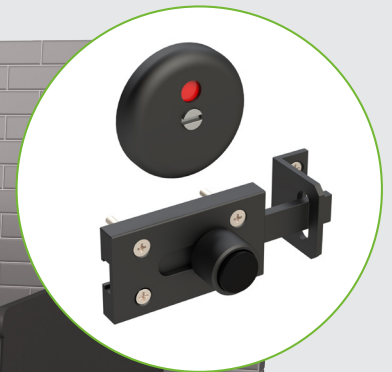




# Step 5

- When setting out front pilasters please make sure you follow the layout drawings for your cubicle set. (i.e., 650mm door - walk through clearance between pilasters 605mm)
- Make sure you have the pilaster the correct way round to indicate which is top and bottom.  
(from the bottom of the pilaster to the centre 1st 10mm hole is 201mm).
- Secure and fix the cubicle doors to the front pilasters by using the hinge set provided. The pilasters are pre-drilled ready for the hinge bracket on the pilaster.
- Fix and secure the hinge plate to the cubicle door into the pre-drilled holes.
- Fasten and secure the cubicle doors onto the pilaster hinge bracket.
- Install the 1B1 Indicator locks once doors have been fitted. For outward opening doors please use the outward opening lock latch, which is fitted to the outside of the pilasters.

## Inward opening



## Outward opening

# Step 6

1. Install 1B12 Indicator lock.
2. **Inward opening doors**  
The turn handle lock is fitted onto the pilaster with the arm locking onto the door.
3. **Outward opening doors**  
The turn handle lock is fitted onto the door with the arm locking onto the pilaster.

